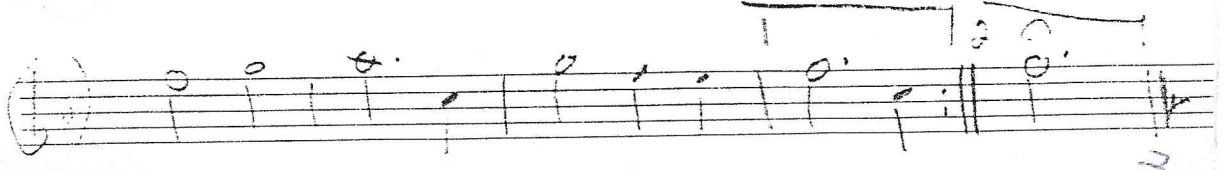
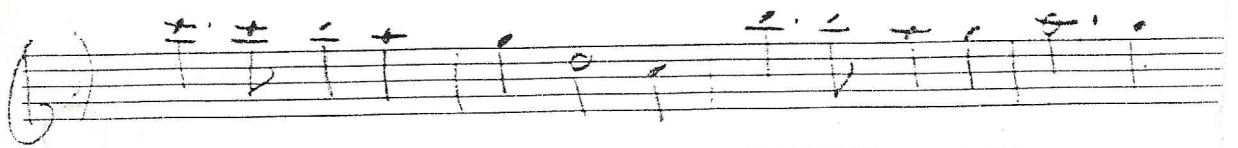
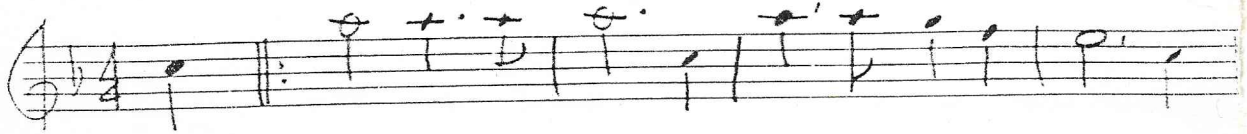


Flute

Alma Mater



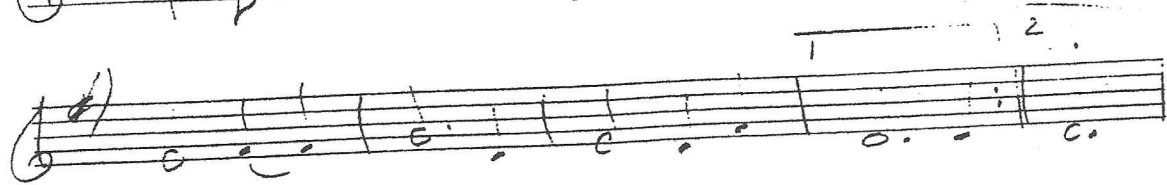
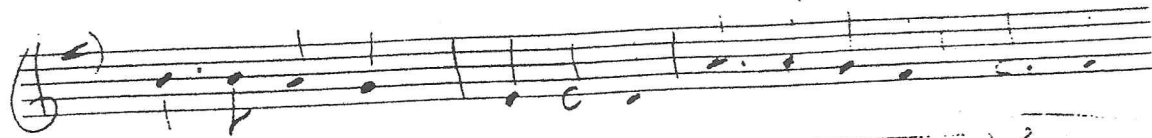
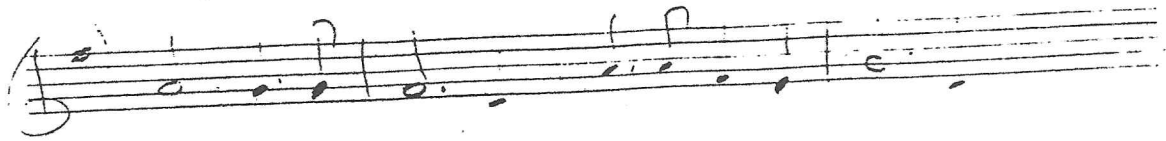
Alma Mater.

B♭ Clarinet / Tpt 1

Handwritten musical score for B♭ Clarinet / Tpt 1, titled "Alma Mater." The score consists of four staves of music in G major (one sharp) and 4/4 time. The notation includes various note values (quarter, eighth, and half notes), rests, and dynamic markings such as accents and hairpins. The first staff begins with a double bar line and a repeat sign. The second staff features a fermata over the final note. The third staff includes a slur over a group of notes. The fourth staff concludes with a double bar line and a repeat sign.

Clarinet 2 / T-2 Alma Mater

37



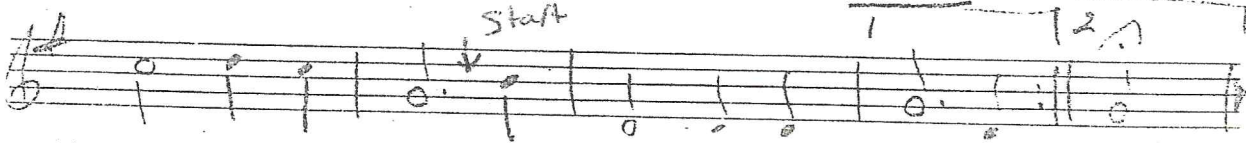
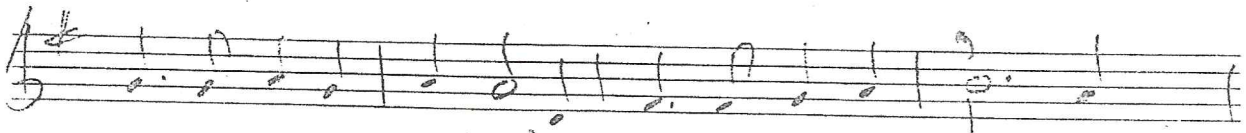
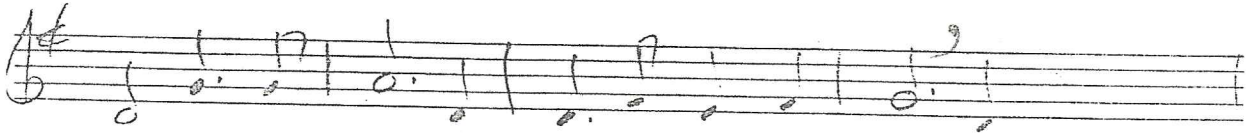
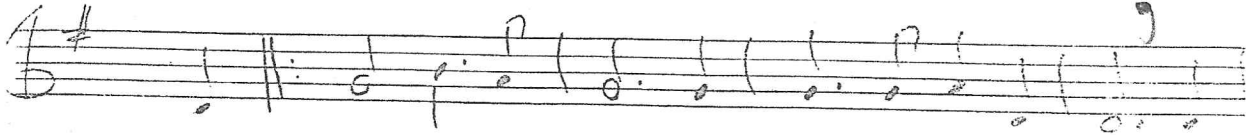
Alma Mater

Alto Sax

Alma Mater

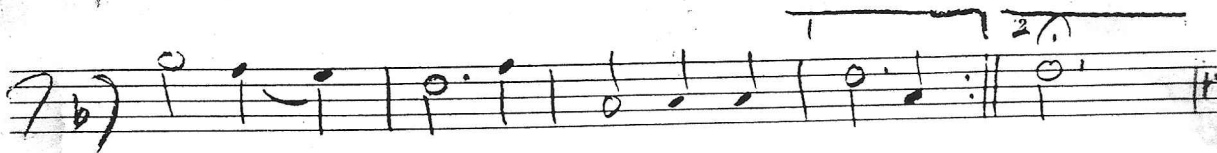
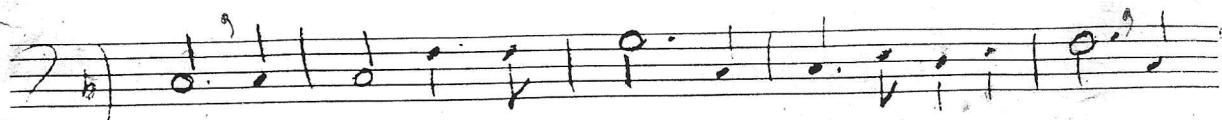
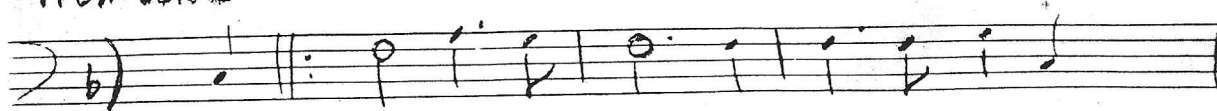
58

Tenor Sax / Baritone Horn



Trombone

Alma Mater

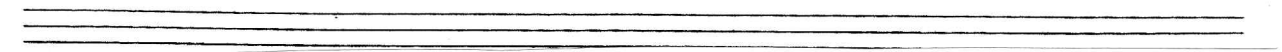
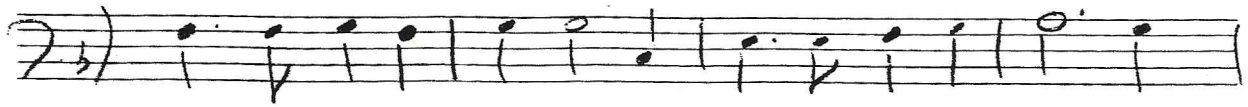
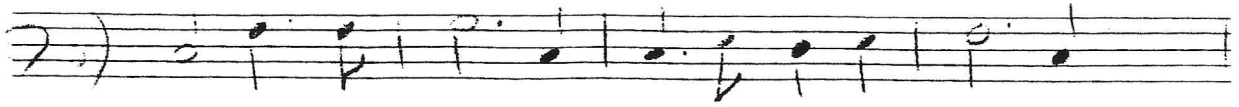


LEONARD

Recorded by THE KINGSMEN

1967

Баритон Абул): *С. МАТИН*



Alma Mater

Tuba

Handwritten musical score for Tuba, titled "Alma Mater". The score consists of four staves of music in 2/4 time, with a key signature of one flat (Bb). The notation includes notes, rests, and fingerings. The first staff begins with a treble clef and a key signature of one flat. The second staff has a treble clef and a key signature of one flat. The third staff has a bass clef and a key signature of one flat. The fourth staff has a bass clef and a key signature of one flat. The music is written in a simple, handwritten style with some corrections and markings.